

WATERBEACH COMMUNITY ASSOCIATION

Beach News

WATERBEACH - LANDBEACH - CHITTERING

*Summer 2014
No.239*



BEACH NEWS

Journal of Waterbeach Community Association
www.waterbeach.org

‘Beach News’ is edited and distributed entirely by non-professional volunteers and is delivered free to residents of Waterbeach, Landbeach and Chittering four times a year.

The Association welcomes contributions on subjects of local interest but reserves the right to edit or omit articles without notice at their discretion.

Views expressed are not necessarily those of the Association and advertisements published in ‘Beach News’ are subject to individual agreements between advertisers and readers and the Association cannot be held responsible for the quality of goods or services supplied.

Articles for inclusion in ‘Beach News’ should be emailed to
beachnews@waterbeach.org

Please refer any problems with advertisers to
Jacqui Rabbett 01223 860993.

The nature of production makes publication dates uncertain but editions should appear as follows:

No. 240 (Autumn) 20th September 2014 – copy by 29th August 2014

No. 241 (Winter) 6th December 2014 – copy by 14th November 2014

Whilst every effort will be made to adhere to this schedule unforeseen circumstances may delay or restrict publication or delivery and no responsibility can be accepted for late or non-appearance.

WHERE TO SEND YOUR ARTICLE

If you would like information on your group to be published in Beach News, or have some interesting news to share, write an article and send it along. Email it to **beachnews@waterbeach.org** or send it to 5 Spurgeons Ave, Waterbeach, Cambridge CB25 9NU.

If you have posters detailing one off local events that you would like put up in the Associations notice boards at Waterbeach Green, Post Office and School entrances on High Street and Way Lane, please post four copies to 5 Spurgeons Avenue, Waterbeach, Cambridge CB25 9NU (Maximum size poster A4 in portrait format)

Contents

Community Association	3	Médecins Sans Frontières	20
Fire and Rescue Service	5	Message from Cllr. James Hockney	21
County Councillor's Report	6	Community Playgroup	23
Carers Support Team	7	Impington Village College	24
Salvation Army	8	Waterbeach Colts FC	25
Waterbeach Day Centre	9	Jazzercise	25
Gardening Club	10	Summer at the Museums 2014	26
Waterbeach Village Society	11	Accessing Adult Social Care	27
Waterbeach Brass	11	Fire and Rescue Service	28
Toddler Playgroup	12	Waterbeach WI	28
Beach Social Club	13	Waterbeach United Charities	28
Waterbeach Surgery	14	Re-cycling Open Day	29
News from Cllr. Peter Johnson	15	Waterbeach United Charities	29
Happy Folks Club	17	Advice from Trading Standards	30
MacMillan Cancer Care	17	'Young at Heart' Party Invitation	31
Shop Local, Trade Local	18	Cambridge Open Studios	32
Charity Sky Dive Event	19	Matron Lucy Maud Toller	33

Community Association



Young at Heart Party – Waterbeach Community Association have once again joined with Waterbeach Primary School to offer all residents of Waterbeach, Landbeach and Chittering aged 60 plus an afternoon of entertainment followed by afternoon tea. This will take place at Waterbeach School on Thursday 26th June at 1.30pm. The entertainment will be provided by the children in years 5 and 6 who will give a performance of 'Alice in Wonderland'. Doors will open at 1.30pm and the performance will start at 1.45pm.

Please note that as the party will be held during a normal school day there will be no admission before 1.30pm and entrance will be via High Street only, as the back gate on Way Lane will be locked.

You will find your invitation and place confirmation form on page 31. This needs to be returned by Friday 30th May 2014.

Feast - Feast is fast approaching and we hope you are all proceeding well with your preparations for floats and stalls. This year's theme is "Something beginning with H...." – we're hoping to see many floats, walking groups and individuals to make a spectacular and colourful



parade. We need to remind you that any vehicle in the parade must be road legal and appropriately insured by the owner.

The parade will leave the school at 2pm and will be led by the Soham Fenlander Majorette Troupe and we would like to encourage spectators on



the parade route to join in by cheering, clapping and waving. Bring your whistles, rattles and hooters and let's all make it a lively parade.

Due to the ever increasing Health and Safety requirements we have to conform to it is imperative that we have sufficient marshals for the parade. If you are able to assist please contact 01223 860993, leave a message on

01223 476601 or email feast@waterbeach.org

Please note that the roads around the village will be congested on Feast Day and we ask that you please be careful and try to avoid driving through the village between 2-3pm. Thank you.

There will be a varied programme of events in the arena including performances by Waterbeach Brass, the Shire of Flintheath Medieval Society, the Soham Fenlander Majorette Troupe, ballet dancers, gymnasts and a demonstration of circus skills to name a few. There will also be fairground attractions and rides and a wide range of stalls including refreshments, children's activities, games and competitions, a woodturning demonstration and a display of vintage vehicles.

We will be holding a Raffle on the day to raise funds for this and future Feasts. Please come along to the Waterbeach Community Association tent and support the Feast by buying some tickets and you never know you may win a prize!



Feast Collection - It was decided that this year's collection at the Feast should be used to support Waterbeach Community Association and local groups. The Army Cadets and marshals will carry collection buckets along

the parade route, so please bring your loose change and give generously. There will also be a collection bucket in the Community Association tent on the Green.

Noticeboards – In 2011 Waterbeach Community Association replaced our old dilapidated noticeboards on the Green and at the front entrance of the school. We have since erected two additional boards at the Post Office and near the rear entrance to the school on Way Lane. The boards are used to promote *one off* events in the area. Local clubs, groups and organisations can send copies of their posters to 5 Spurgeons Avenue, Waterbeach, Cambridge CB25 9NU (maximum size poster A4 in portrait format).

We are delighted to say the boards are very well used and so far this year we have displayed posters for over 80 different events. Keep up to date with local events, have a look on the notice boards and also check the 'What's On' page of the Waterbeach Community Association website www.waterbeach.org

Farewell – In 2009 Kevin and Wendy Brown came to Waterbeach Salvation Army. They both immediately became part of our community and embraced many aspects of village life. It is now time for us to bid them farewell as they take up their new appointment in Lincolnshire.

We would like to thank them both for their support and hard work during their time in Waterbeach and we wish them all the very best for the future.

Fire and Rescue Service



Barbecue Safety: The sun has finally arrived so I'm sure some residents will enjoy a tasty barbecue – but all barbecues can get out of control if care is not taken. Follow our top tips for a safe barbecue:

- Place your barbecues on level ground where it will not tip over.
- Site barbecues away from sheds, fences, overhanging foliage and the house.
- Keep children and garden games well away from the cooking area.
- Never leave barbecues unattended.
- When cooking is finished, ensure the barbecue is cool before moving it.
- NEVER pour petrol or other highly flammable liquids over any barbecue.

For more advice about coal or gas barbecue safety, log on to www.cambsfire.gov.uk/firesafety.

Like our fan page on Facebook: www.facebook.com/cambsfrs, follow us on Twitter @cambsfrs.

County Councillor's Report

The County Council is short of money. It receives and spends about half a billion pounds a year. The biggest items in its budget are the care of elderly people and of children, and the numbers of both of these groups are rising. On the other hand the government plans for reducing public spending mean that the County Council faces cuts of about £150million over the next five years.

That is why we hear so much about cuts to the services the council provides. Because it affects nearly everyone, the issue most often mentioned to me is the state of our roads in general, and potholes in particular. The three questions I hear are: Why do we get so many potholes? Why does it take so long to repair them? And, Why don't they make a better job of repairing them? Sometimes it appears to be only a matter of weeks before the repair breaks down and needs to be done again.

There is no doubt that years of under-investment in road maintenance is responsible for the current condition of the roads. The County Council is borrowing £90million for a five year programme to address part of the problem. In addition to that, the council plans to rebalance the way it carries out road maintenance.

It is far more cost effective to have a programme of planned maintenance, addressing whole sections of road before they begin to crumble, rather than dashing about all over the place patching up potholes as they appear (or, more usually, weeks or months later when they reach the top of the pile of outstanding jobs).

It is a good idea, and more economical. The only drawback is that, as there is no extra money, there will be less to spend on the existing potholes in the meantime. But don't stop reporting them, and I will still be pestering the Highways Department to get them repaired.

In the last issue of Beach News I mentioned the parish council's bid for a pedestrian crossing on Chapel Street. Although this scheme did score quite well, it did not get enough points to be included in the list for funding by the County Council this year. The parish council will need to decide whether or not to bid again next year.

You may be surprised to hear about the County Council's cash woes if you heard the news that Greater Cambridge is to receive up to £500million of funding for the City Deal. This money though is specifically related to infrastructure projects for development growth. That means things like new and improved roads to enable more houses to be built. We are still fighting to prevent the development of the land beyond the barracks for Waterbeach New Town, but, if it does go ahead, a lot of this money will be spent on the

A10 (possibly on a new alignment), the A10/A14 junction at Milton, moving the railway station, and a threatened new busway.

On a more positive note, I have been told that work should start on the second phase of the Landbeach Cycleway in July. This is the pedestrian and cycle crossing on the A10 at Humphries Way, Milton.

As ever, do please contact me if you think I may be able to help.

Maurice Leeke. Maurice16@ntlworld.com . 01223 441562

Carers Support Team



Free and confidential advice about support for adults with long-term care needs and carers.

A series of drop-in sessions are being held at The Horizon Centre in Cambridge for adults with long-term care needs and carers. If you are an adult living with a long-term illness or disability, an older person struggling with an age-related condition, or if you are providing unpaid support to an adult family member or a friend who could not manage without this help, why not come along for a cup of tea and a chat?

Sessions are being held on the last Wednesday of the month during 2014. Come along at any time between 1.00-3.00pm and you will be able to get free and confidential information and advice about the support that may be available to you. Each informal session will have a speaker, an opportunity to book a one-to-one advice session and/or a carers assessment, share information and experience with others or talk in confidence to staff from adult social care Disability Services and the Carers Support Team.

Speakers at forthcoming drop-ins:

- **28th May** – specialist information on the Mental Capacity Act, Lasting Power of Attorney (LPA) and safeguarding vulnerable adults.
- **25th June** – specialist information from JobCentrePlus. There will also be an art activity for you to take part in.

For more information about the drop-in sessions phone 01480 377616 / 01480 373220 or email CarersSupportTeam@cambridgeshire.gov.uk

The Horizon Centre is at 285 Coldhams Lane, Cambridge CB1 3HY (near the roundabout opposite Sainsbury's).

If you need advice about adult care and support but are unable to come to one of the drop-in sessions you can find out more on our adult social care website www.yourlifeyourchoice.org.uk or you can contact adult social care Customer Services on 0345 045 5202.

Salvation Army

The Salvation Army changes Leadership in Waterbeach

In July we will be leaving the beautiful village of Waterbeach and heading north to take up our new appointment of Church Leaders in Bourne, Lincolnshire. Waterbeach has been our first Church Leadership appointment since leaving the Salvation Army Training College back in 2009, it was all very new to us back then, settling into a small community having lived in a city for most of our lives and serving the local SA Church and community. We have loved it and will take with us many happy memories of our stay here. We have made many new friends within the community of Waterbeach and surrounding area who have supported and encouraged us in our ministry and we will miss you all.

Our thanks go to so many people, but we would like to especially thank and acknowledge firstly, our own Church congregation who have stretched our imagination in ministry in so many ways that we have learnt so much, Waterbeach Community Association for their support and encouragement and involvement in community events especially the Annual Feast, Waterbeach Community Primary School, both



the staff and children who have allowed us to teach and reach out to the youngsters through various activities i.e. assemblies, class work and much more and finally we would like to acknowledge the support we have received from the other Ministers in the village, it has been a pleasure to work with you on Ecumenical events.

So it is with a touch of sadness we say “*Thank you and Goodbye*”, the people of Waterbeach will always hold a special place in our hearts. But the work of The Salvation Army will continue and at the end of July Majors Colin and Valerie Harrod will be taking over from us and we leave knowing that you will welcome them into your community as you did us when we first arrived.

6th July will be our final Sunday and we would like to invite you to our informal farewell at 4pm at the SA Hall, a chance for us to say in person thank you and goodbye whilst sharing in some refreshments. We would love to see you there.

Lieutenants Kevin & Wendy Brown

Waterbeach Day Centre

A big 'thank you' : Cash for the Community - Grateful thanks from all of us at the Waterbeach Day Care Centre to everyone who saved the tokens from the Cambridge News for the Cash for the Community Awards sponsored by the Cambridge Building Society and the Cambridge News. Over 1,000 tokens were collected and sent in on behalf of the Centre and we were lucky enough to receive the sum of just under £475 to go to our funds and help us continue running. Well done everyone and thank you!

Easter Sale... another thank you - We held our Easter Sale on Saturday, 5 April. Many thanks to all those who donated and made items. This helped raise over £400.

What else do we do..... We meet at the Denson Close Community Room twice a week, on Mondays and Wednesdays, from 11.00 in the morning to around 3.30pm. A home-cooked two-course hot lunch is provided every day for our members - as well as morning coffee and biscuits and afternoon tea and cakes. There are organised activities to join in with, as well as catching up with old friends and neighbours - or making new ones! The great value cost of all this is only £3.50 per day per member. Costs are kept low through grants from the Waterbeach United Charity, Waterbeach Parish Council, and Cambridgeshire Community Foundation (CCF). The Centre is extremely grateful for the support of these bodies.

We have a membership list so that we know how many lunches to provide each day; members of the group can attend on one or both days each week. Where needed, transport to and from the Denson Close Community Room can be arranged. We are a Day Care Centre aiming to provide a social environment - and members are asked to attend for the whole period, not for lunch only.

We still need ... volunteers - Can you spare a few hours on a Wednesday? We are in desperate need helpers on that day.

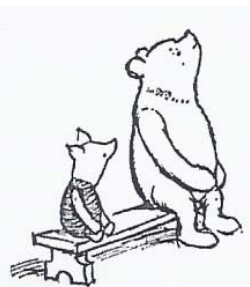
LocalGiving.com - We have recently established our very own web-page on LocalGiving.com. This is a national organisation which verifies the validity of voluntary groups and attracts donations from local businesses and individuals who wish to support local, rather than national, charities. Take a look at the website and find our page!

Forthcoming Events - We are holding our Annual General meeting at the end of April and then will have our Summer Sale with Cream Teas in June or July. Watch this space.....

If you would like to know more about the Waterbeach Day Care Centre please contact Mary on 01223 564666. Or come along to the Denson Close Community Room. Monday and Wednesday : 11am to 3.30pm

Gardening Club

The Winter /Spring series of expert presentations will have been completed by the end of May and the Programme Secretary, Jill Briggs, is to be congratulated for the success of her diverse programme of talks, and 'hands-on' demonstrations of 'how-to' and 'how-not-to'.



In March Barry Gayton introduced us to developing and succeeding with a commercial garden, from the starting position of a passion for plants. In April, Lamorna Thomas of Garden Inspirations, not only completed two substantial hanging baskets for shade and sunny positions but also judged the Spring Show entries- all received a prize sticker—'everyone a winner'. The two baskets formed two raffle prizes. The May meeting by David Holmes on 'Raking up the Past' - has led to an outbreak of shed-clearing as members have searched for that long-lost piece of gardening kit that grandpa had passed down..."treasure that my son, a rare item...worth its weight in gold"!

Two Summer visits are planned: a weekday afternoon guided tour of the University Botanic Garden and a weekend day-coach- trip to an outstanding garden. Details will be circulated to members, announced on the usual posters, or if you wish contact us telephone:01223 574050 or 01223 860280. The Club will be at our usual stand at the upcoming Feast. We will have a rich diversity of plants: flowers, vegetables and herbs, and we look forward to meeting old friends.

During August we will hold our Summer Barbecue for R and R, which is essential as local gardeners both members and non-members are advised to stiffen their sinews, give up the idle contemplation of the delights of nature and consult the experts to prepare for the



29th ANNUAL SHOW on Saturday 6th September 2014. Come and join our friendly competition and enjoy the display of over 100 classes, for both adults and children, of fruit, vegetables, flowers, handicrafts, painting and photography, baking, jams and pickles. As a result of the 'Great British Bake Off' we expect a prodigious entry for the Victoria Sponge class!

The Schedule/Rules and Entry forms will be available from local shops, churches and pubs during August. If you need more information before schedules are available please phone either of the two telephone numbers above. The 2014-15 programme will be available at the Show and we look forward to seeing you at forthcoming events.

Waterbeach Village Society

Our season of talks has now been completed, until our next meeting on Tuesday 23rd September 2014. David Palmer, auctioneer, who appears regularly on TV's "Flog It" will be talking to the title "Reasons to be wary of a man with a gavel." David has a reputation as a jester, so this talk promises to be humorous. Waterbeach Feast is being held on Saturday 7th June, so we would be delighted to see you at our stand at the Old Firehouse on the Green. We will have an interesting display of old photographs of Waterbeach and its past inhabitants.

For more information on the above and the rest of the Society's programme, contact Adrian Wright, Chairman - adrianj.wright@ntlworld.com or 01223 861846, Ray Rice, Secretary - raythefingers@aol.com or 01223 860663 or David Armstrong, Treasurer - armstrong586@o2.co.uk or 01223 861586.

The Society aims to stimulate interest in, and care for the attractiveness, history and character of Waterbeach and its surroundings, and talks of general interest. Meetings take place from September to May on the fourth Tuesday of the month in the Community School Library at 7.45pm. Visitors are welcome at all meetings and are invited to contribute £3.00 per person.

Waterbeach Brass

Waterbeach Brass have had a busy spring which included competing at the London & Southern Counties regional contest in Stevenage. This year the band achieved 9th place, competing against 15 other bands in the 3rd section. We are now enjoying practising music for our upcoming events, playing a wide variety of pieces from The Best of George Gershwin to Bohemian Rhapsody.

We would love to see you at one (or more!) of our summer concerts; come along to listen to Waterbeach Brass perform some great music and be entertained!

Forthcoming Engagements

Sun 25th May Jubilee Gardens, Ely Riverside, 14:30
Sat 31st May Concert with Corona Brass, The Free Church, St Ives, 19:30
Sat 7th June Waterbeach Feast, 13:00
Sun 31st August Jazz & Brass in the Parks, Christ's Pieces, 15:00

If you are interested in joining the band, or booking the band for an event, please visit our website: www.waterbeachbrass.org, or call our Chairman Richard: 01223 355987.

Toddler Playgroup



It hardly seems possible, but the Summer Term is already here! Much of the next month will see us preparing for the Feast and embracing our theme of 'Honeybees'. The children will be learning about



'Mini-Beasts' throughout the first half of the term and towards the end of the topic we are hoping to welcome members of the Cambridgeshire Beekeepers Association to the playgroup. The children will also be working hard to turn themselves into bees to help decorate our stall, so it will be well worth searching us out on the Green to see what other honeybee themed delights we

will have for you. One thing is for certain, it will be easy to spot our eldest children and staff as they walk in the parade!

The committee have been as hard at work over these past few months as ever. First of all, a big thank you must go out to everyone who turned up to support our Auction of Promises, which raised an amazing £2578. Our Mothers' Day Flower and Cake Stall was also a success, with our hard working Mums and staff members working hard to produce a stunning (and tempting) array of tasty cakes and beautiful bunches and baskets of flowers for sale. The weather on the morning of the stall turned out to be glorious and we thank everyone who turned up and bought to help us raise a fantastic £392.

This term will also be the final one for our eldest children before they move on to 'big school'. The programme to ensure they are as best prepared for this big step is already well underway, with visits to spend time in their new surroundings already taking place. A celebration is also being planned within playgroup to mark their time with us, and if past years are anything to go by this will be an occasion of both joy and tears. We are very proud of them all and wish each and every one of them the very best. After the term has finished we will be holding our annual Family Fun Day for all of the playgroup children, their siblings and parents, which this year will make use of local facilities on the rec and in the Tillage Hall, with fun, games and a picnic.

Lastly, we are very excited to be celebrating the launch of our new look website later this term. We would be the first to agree that our old one has become somewhat tired looking and in need of a little updating. We ran a

special art session during the Easter holidays to help provide images for the new website and now are very much looking forward to seeing the website 'go live'. Our web address will remain the same (www.waterbeachtoddlerplaygroup.org.uk). In the meantime, if you wish to find out more about the playgroup, please check out our (old) website or contact our Play Leader, Wayne Badcock on 07808 357729 or via e-mail at wayne@waterbeachtoddlerplaygroup.org.uk. Alternatively, any of our committee members would be delighted to talk to you!

Beach Social Club

Well, Easter is over and I hope you were all fully 'Chocolated'.

The 'March of the Mods' evening was very successful and raised much needed funds for the Teenage Cancer Trust.

Other nights included Medicine Tree and Poontang, good hearty earthy music.

We have Bingo, with cash prizes every Monday evening from 7-9. Everyone is welcome to join us for these sessions.

Every other month we have 'Open Mic' night when local bands, musicians and singers come along and perform; in fact anyone who would like to come along and take part is welcome. Bring along your guitar and any other instrument, or just your voice and enjoy a session. The next open Mic is Friday 6th June

Future entertainment:

Saturday May 24th - from 8.30 - free Ziggy / Bob Marley Tribute

Sunday June 1st - 6th - Waterbeach Watering Hole Olympics

Saturday June 7th - Waterbeach FC Charity Race Night

Saturday June 28th - from 8.30 ELVIS Cabaret

(Members £2 / £4 Guests)

Saturday July 12th - 5.30-8.30 - Free Family Disco followed by the Match.

The World Cup will feature large and matches can be viewed on our large screen in the comfortable lounge, bring the family and enjoy a drink at the same time, most at the lowest price in the village.

Our Club charity this year, until October, is Waterbeach Scouts and Guides groups inc. Brownies, Cubs, Beavers and Rainbows. We will be raising funds for them during all of the screened matches.

I look forward to seeing you here in the future.

Details for all events and memberships are available at the Club and at: www.BeachSocialClub.com

Geoff Donovan Chairman

Waterbeach Surgery

Doctor Machen was bid a fond farewell at the end of March and we extend our best wishes for a long and happy retirement.

On a further sad note, Dr Howard will have moved to pastures new by the time you read this having left us at the end of April. Again, we wish her all the best in her new job and for the future.

However, we are very pleased to announce that Dr Al Ghazzi has joined us as a Partner and I'm sure you'll join us in extending her a warm welcome.

We would also like to congratulate our nurse, Diane Manian for the receipt of the Queen's award for nursing. Well done Diane, we are privileged to have you!

Did you know....we have a website? www.waterbeachsurgery.co.uk

Did you know....we have a Patient Participation Group (PPG)? If you're interested in knowing more about the services available to you and being part of the group, please feel free to contact Janine at the surgery, details below.

Patient Participation Group (PPG)

The purpose of this Group is to encourage patients to be involved in decisions about the range and quality of services provided and, over time, commissioned by the practice.

Who are we?

- A group of patients who are served by Waterbeach Surgery

Why do we exist?

- To help our doctors and nurses provide our community with the best healthcare possible
- To enable patients to know what is available to help them
- To share positive health messages within our community
- To be represented on our Local Commissioning Group (CATCH)

Where and how often do we meet?

- In the Beach Social Club every two months

We hope to have an information stall on the Green on Feast Day to explain how you can become involved and to ask your opinions. More information is available on the websites of Cambridge and Peterborough Clinical Commissioning Group (www.cambridgeshireandpeterboroughccg.nhs.uk) and our surgery (www.waterbeachsurgery.co.uk). We shall be holding an open information evening sometime in June. Look out for details online and on Community Notice Boards.

Janine Elsegood, Practice Manager, 01223 860387

News from Cllr. Peter Johnson

The local plan has now been submitted despite the many objections I raised along with many residents who also raised so many valid points; we have to hope that the inspector who has the responsibility to cast judgement on the plan will see sense and reject it. There have been other planning applications for the Bannold Road/Cody Road area and so far all refused permission but one has gone to appeal which resulted in a 3 day appeal hearing at Cambourne. It was so intense that another day will be needed for the summing up followed by a site visit and that has been set for Friday 2nd May. There will be another appeal hearing mid-May for one of the applications for Bannold Road/Cody Road area and it will be the same inspector who will make a judgement on both applications June/July.

It is good to see a lot of the former married quarters being occupied again and I say a big “Welcome” to these new residents to our village. These are fine houses and was such a shame to see them empty. On another good note South Cambs District Council have leased 28 houses in Park Crescent from the MOD, for 5 years initially with the possibility of this lease being extended after the first 5 years. These are for people with Waterbeach connections to try and ensure local people are housed first.

The building work at the old goods yard should soon be finished and the remaining space is expected to create 30 car parking spaces which as everyone knows are much needed. I expect to be meeting with Network Rail managers and South Cambs Planners early May to discuss progress and also so that Network Rail can see the parking issue we have just now and the reasons why this work needs to be completed as soon as is practical.

The number of bikes chained to the railings at Lodeside Caravan Park has greatly reduced so the bike racks are being used by many people. There are still just a few still chaining their bikes to the railings, but hopefully they will catch on that there are adequate bike racks available.

Friday 25th April was Launch Day for the Outdoor Fitness equipment on the Rec, but the weather let us down, grey skies and showers really put a damper on things with only a few people attending. Paul from Pennine Playgrounds who supplied the equipment and Mark Shelton from AmeyCespa who provided funding for this project also attended. Tosha Seymour gave demonstrations showing how the equipment should be used to get the best out of it with one or two individuals also having a go. As the weather improves I am sure that many more people will use the equipment and who knows, we may end up with a village with super fit residents.

The Skateboard park project has encountered problems with possible

suppliers not turning up for meetings and then as it is going to be quite costly it was decided the job should go out to tender so a tender document had to be drawn up and then checked; but everyone wants value for money so this route has to be followed and I will be assisting the Parish Council as much as I can.

Robson Court is no more, the original buildings have been flattened and now the new buildings are rising like a phoenix from the ashes, completion is expected early 2015. This will be to provide accommodation of a present day standard for people who have been made homeless and not necessarily of their own making; it will be run to prevent the behaviour associated with the old establishment. With this in mind we are looking for a new name for this area, to still call it Robson Court will give it a stigma associated with that name so a new name is needed. Ideas please either to me or to the Parish Council.

I feel I have to continue to remind motorists parking in our village, please be aware of the dropped kerbs that are so invaluable for our residents with prams, buggies, and of course users of disabled buggies, when cars block them off it causes great inconvenience to these people.

The Tithe Barn in Landbeach is another project I am working on, this is an important feature as this building is almost as it was built over 400 years ago. Work is needed to preserve this building and South Cambs District Council cannot afford to do any more with this so we need some money to save this barn. I am sure that there are some people in our villages who have never seen it, but nevertheless it is a hidden treasure and I really hope that we can raise some money because there is a possibility it could be sold and who knows what would happen to it then.

For the last 8 years I have had the honour and privilege to be your District Councillor to represent you all at South Cambs District Council and for that I say "Thank You". I just hope to continue in this role so please remember I work for everyone in our villages so if you have any problems or issues you would like to talk to me about please contact me by whatever means you prefer, telephone, e-mail, or knock on my door, don't forget I am here for all of you.

Exercises at Denson Close

Chair based exercises classes

Now on Friday mornings at 10.30am

in Denson Close Community Room

£2.00 including advice and refreshments

All ages and abilities welcome

Happy Folks Club

On Friday March 7th Alice Coxall stepped down as Chairperson of the Happy Folks Club. Alice had served the club for 22 years and felt at the age of 85 it was time to take a back seat and just come along and enjoy the bingo and have a cup of tea and biscuits with all the other members. She was presented with gifts and a cheque from the club itself, and vouchers to the value of £75 from the members. The Cambridge News attended and photographs were taken.



Alice thanked all members for their support over the last 22 years and said she will continue to go on club outings.

Anyone wishing to join the club should contact the new club chairman, Stuart Atkins on 01223 862674 or just come along to the Beach Social Club Friday afternoons between 1.30pm and 4.00pm

MacMillan Cancer Care

A tea party in Primrose Lane raised £150 in March to help sponsor friends and relatives participating in this year's MacMillan 4x4 Challenge. Residents would like to thank WAY, Waterbeach Action for Youth project, for their support; special thanks to Jacques and his fellow students at Cambridge Regional College for the wonderful cakes! Thanks, too, to Women's World Day of Prayer congregation for moral support!

Team GSC Richard Williams and Drew Brennan <http://www.justgiving.com/TeamGSC2014> improved on last year's results, coming in 19th out of 80 competitors in four days of challenge which involved speed trials in the Midlands, Objective-spotting on the Welsh borders and some very demanding 'Off Road' in Central and North Wales.

The pair have both lost parents to cancer and wanted to help repay some of the Counselling and other support received: the £1460 finally raised exceeds the required fundraising target. Thank you, Waterbeach.

Shop Local, Trade Local

Following the meeting in March to discuss the workshop ***Waterbeach: Vision for the Future*** for Waterbeach Shops and Businesses, Carol Deslandes from Exemplas produced the Action plan and we met again on April 23rd 2014 to go through the details and to discuss the objectives and tasks involved.

The objectives set out were:

- Build on the success of the Shop Local Campaign.
- To explore the opportunities to advertise local businesses through the avenue of social media.
- To ensure that all new residents are aware of the facilities/business services available within the Waterbeach area in a timely manner.
- To encourage/incentivise people to regularly support services in Waterbeach.
- To develop a co-ordinated approach to increase the potential 'foot-fall' of tourist attractions and businesses.
- To improve B2B opportunities with the larger businesses based on the periphery of Waterbeach.
- To ensure that the Business Association is resourced at an appropriate level so that the momentum required to develop/sustain the business community in the area is maintained.

Discussion of these topics was interesting and valuable to the group. Future Tasks, Criteria for Success and Time Frames were then added to the objectives and all in all produced a very valuable meeting for everyone who was in attendance.

We have now had 5 meetings and it is now obvious that the talking is done and the doing must start or we shall just become a talking group so how do we move on from here?

The objectives above now need to be actioned and we, as a group, will now actively set out to meet the objectives within their own businesses as well, so keep an eye out for the Waterbeach Shop Local, Trade Local logo in shops and businesses in the very near future.

The idea of printed directory of local businesses and shops has been talked about prominently. If local community groups could add their information and events too – we feel this could be a valuable addition to the already excellent Beach News. Contact us if you feel this would be a good idea.

The meeting finished with a small workshop on Marketing – unlocking your potential which was very informative and useful. Also offered to the group

was the South Cambs Support Service Spring Workshop programme which offers 3–4 hour workshops for £10 on:

- Sustainability for rural based businesses
- How to plan for success – business planning
- How to find and keep customers
- How to maximize market awareness – via websites and social media
- How to find and win new contracts
- How to improve your profit.

These workshops are available to all businesses and further details can be found by calling 0844 346 0755 or email:

southcambsbusinesssupport@exemplas.com .

If you are running a business in the locality, and you have reasons for perhaps not wanting to join this group please do take the trouble to email us as to why. All feedback is valuable. It may be as simple as the timing of meetings don't suit you, are your concerns the time required to invest in this project or is it that you don't feel that this initiative will be of benefit to your business? All responses will be treated with uppermost respect.

Contact us via email waterbeachshoplocaltradelocal@gmail.com

Charity Sky Dive Event



A Class Care Ltd is a privately owned Home Care

Provider that provides to support to clients that live within their own homes. Having looked after elderly clients for a number of years they have observed an increase in demand for care for loved ones who suffer with dementia. A Class Care have additionally identified a knowledge gap on the type of support available to dementia sufferers and their family.

As a result, A Class Care have decided to take action. They are currently supporting the Alzheimer's society to promote the awareness of dementia, to make people aware of what support is available to them and to sign post clients and/or their family to additional resources. A Class Care feel that more can be done to help suffers. This is why they have organised a charity Sky Diving event.

A Class Care's staff members and volunteers are organising a charity Sky Dive at the Peterborough Sky Diving Centre in July 2014. It's A Class Care goal to raise £3,000 or more. The money raised will go directly to the charity. We are seeking volunteers to join us and jump. If you are interested in participating then please contact A Class Care Ltd on 01223 864066. If you would like to make a donation then please visit our just giving page www.justgiving.com/user/49635221.

Médecins Sans Frontières

Thank you, Waterbeach and Landbeach Churches Together; our two Communities; our local businesses: you have helped raised enough money for seven emergency surgery/obstetric kits for the work of Médecins Sans Frontières in Syria.

Right across our local communities people have come forward to contribute to this non-political, non-religious medical-aid organisation: MSF operate in defiance of terrorist threats; they compile statistics and testimonies about the effects of war to a standard respected by the EU, the UN and the G20 Summit. As well as providing field-hospitals for civilians in unmarked houses they are attempting to offer whatever perinatal care can be achieved.

'It makes a huge difference to us, the volunteer medical staff, to know that there are people like you thinking of us and supporting us' said Dr C, who happened to see our posters in Waterbeach when she was home on leave from MSF work in another 'hot spot'.

To date we have raised over one and a half thousand pounds by singing and by silence – both of which can be a bit scary! Our events have showcased Rockin' Reverends and Wonderful WAY Project Vocalists; St John's Living With Integrity Group has provided backing - and challenge – right the way through.

Thank you, Waterbeach and Landbeach, for your generosity with time and money... and to Trevor, Stuart, Claire, Verity, Adrian, Shirley and the Sheila/ghs – among very many others - for behind the scenes graft.

Sound Out for Syria:	£1,048.00
Christmas Crib Service, St John's	145.00
WI and Waterbeach Wives Carol Service	110.00
Light A Candle for Syria/Candlemas	280.00
Plus £95 + £25	<u>120.00</u>
Total to date:	<u>£1703.00</u>

Angela Brown for St John's Living With Integrity Group. <http://www.msf.org.uk/country-region/syria>

Cambridge Summer Music

Music in Quiet Places: Morag Brown & Lewis Powell-Reid

Friday 23rd May at 7:30pm

All Saints' Church, Landbeach

Exciting folk music from north of the border - an exhilarating mix of traditional British folk, Celtic styles, klezmer and French folk music, on fiddle, bouzouki and accordion.

Tickets £14, £12 concessions, students/children £6 available on the door, in advance at the Corn Exchange Box Office 01223 357851, or online at www.cambridgesummertime.com

Message from Cllr. James Hockney

Local Plan update- At the Local Plan meeting on March 13th I spoke robustly against the town concept and voted NO to the Local Plan. That said, we are IMBY not NIMBY locally and I proposed an amendment that we should build just on the built area of the barracks and leave it at that. Cllr Sebastian Kindersley kindly seconded this proposal. Sadly the amendment was not allowed, as it was considered to be 'a major change'! The final vote was much closer than expected with 27 for, 21 against with 5 abstentions. Having launched the last three campaigns against the town I am committed as ever on this issue. We will now take our community campaign to the Planning Inspector hearings in the summer. If you are on the web please visit www.facebook.com/waterbeachbarracksnonewtown.

Landbeach Tithe barn - founding a trust - This is a wonderful piece of history and the last remaining Tithe Barn in the County.

I am working closely with SCDC, Landbeach Society and Cambridge Past, Present and Future. Already I have chaired a multi-agency meeting, attended all three of the District Council portfolio meetings and have now been tasked with leading efforts to set up a trust to secure the long term future of the building. Please let me know if you would be interested in being involved. I have been asked to talk at Landbeach Annual Parish Meeting on June 5th about the Tithe Barn.

'Shop Local, Trade Local' - Having founded the scheme I am delighted that following the Shop Local summit that we now have a business network driving forward the scheme. In addition the District Council has made Waterbeach a pilot for its new economic rural strategy. Already four business network meetings have taken place – thank you to the Beach Social Club for hosting these. There is a Facebook page -

www.facebook.com/shoptradelocalwaterbeach - which I administer to promote the scheme. Please do contact me if you wish to promote your business.

1st Local connection housing scheme in Waterbeach! - As we have seen with Chapmans Close and Walnut Close in Landbeach, local connection housing is a great way (and sometimes only way) for local residents to get a home of their own. For some time many of the Park Crescent (off Bannold Road) MoD properties were empty. Because of this I made contact with the MoD, which led to many months of behind the scenes work between the District Council and MoD on a lease agreement. Ultimately leading to – I am so delighted to say – the first local connection housing scheme in Waterbeach.

Waterbeach Post Office - There have been many rumours about our local Post Office. I have been working with our MP's office - which has led to a meeting with a senior representative from Post Office Limited. From this

meeting it was confirmed that the Post Office nationally is embarking on a modernisation process over the next few years. A key feature includes offering longer opening times. This may mean the Post Office moving to another existing shop that already offers longer opening hours in the village. Once the Post Office has assessed the business cases for any local businesses that have expressed an interest, and selected a proposed location, there will then be a public consultation over a period of six weeks, which is likely to start in June. In addition from the meeting I secured the Post Office would be willing to attend a public information briefing session in the village during the consultation process to address any concerns should this be required.

Children's Hospices charity event - Thank you to everyone that attended, donated, gave raffle prizes for the charity lunch at Bollywood Spice. It was well worth organising and together we raised £660.62 in aid of East Anglia's Children's Hospices.

Chittering road maintenance - Although we have seen action on some roads from the County Council; like Station Road, more needs to be done. Old Cambridge Road and Winfold Road are in need of attention. I recently went to look at School Lane in Chittering and found that it is nearly impassable in parts due to the potholes and sunken surface.

Street Lights - Although most areas are now better lit in our villages, a few have been left worse off. In particular many residents have said how much darker Rosemary Road is now that there are fewer lights. I am pressing the County Council for action on this.

Parking in Waterbeach - This does seem to be a growing problem, especially during the week. I am in contact with the Police about dangerous parking and there have been a number of enforcement tickets issued.

Naturally we must see the Station car park expanded. I am liaising with Network Rail to see if part of the old goods yard can provide extra spaces. They are in the process of developing a business plan to bring this forward.

Trees in Waddelow Road/Denson Close - Many residents have contacted me about the overgrown trees that need cutting back. I am working with the District Council to get action.

10 years representing the community - It really does seem like yesterday that I was first elected as your District Councillor, but that was back in 2004! In that time I have had the pleasure of working with many councillors and residents in the community to get action on many key local issues. I am elected until 2016, so very much look forward to continuing to serve the local area.

*Please feel free to contact me; Post: 20 Levitt Lane, Waterbeach, Cambs, CB25 9AZ
Telephone: 01223-441289 Mobile: 07958-389713 E-Mail: j_hockney@btinternet.com
Facebook: Cllr James Hockney Web: www.jameshockney.com Twitter: @CllrJHockney*

Community Playgroup



This term the children have been looking at letters. There have been a lot of varied activities, for all to enjoy, to introduce the children to S, A, T, P, I and N.

These are the first letters often taught in schools during phonics in literacy lessons. We have been concentrating on letter and sound recognition, so the children have been singing songs including 'Ants on the Apple' and 'Tigers on Tiptoes'. We have been looking for letters around the playhouse, decorating large cut out letters and even driving toy cars around the letter shapes to incorporate letters in play.

With the drier, slightly warmer weather the children have been outside building dens, using the logs as stepping stones (pictured) and using colourful ribbons to decorate our wire fence. The mud kitchen remains a popular corner of the garden and we have mud pies and birthday cakes with sticks as candles.



During March we made our annual trip to Planet Zoom. Mums and Dads came along with the children as we enjoyed a train trip to Ely. Then, after a short walk, the children ran excitedly on to the playframe at Planet Zoom.

They all have so much energy they didn't stop jumping in the ball pool, climbing up and sliding down the curly wurly slide until it was time to go home. Everyone enjoyed the trip and there were some tired little feet as we walked back into Waterbeach from the station.

Waterbeach Community Playgroup provides a fun, safe environment with an emphasis on learning through play. If you would like to visit us, please call in during one of our sessions, where you will be warmly welcomed by a team of happy and well qualified staff. Alternatively please contact Jacqui Woods on 01223 440769, info@waterbeachplaygroup.org.uk

Please take a look at our website too, to see more of what we do:
www.waterbeachplaygroup.org.uk

Impington Village College

75 year celebration

Impington Village College originally opened in 1939, within days of the declaration of World War Two. This means that the College will celebrate its 75th anniversary in September 2014. To mark this important milestone the College wish to invite everyone who has had a connection to Impington over the years to join a celebration. When the College opened the catchment area was much wider then it is today including villages such as Waterbeach, Cottenham and Willingham.

Anniversary weekend: 13 – 14 September

The College are hosting an open weekend to celebrate the 75th Anniversary. On Saturday the event will run from 4pm - 8pm with the launch of an anniversary exhibition, films, activities speeches and refreshments. There will also be opportunities for former students, staff, governors and friends of the College to reconnect and share memories. On Sunday the community day will run from 11am – 4pm, including a programme of timetabled activities run by various clubs and societies, as well as workshops and activities for families to enjoy. Please save the date and extend the invitation to your friends. Full details will be shared in June.

Impington Ale

If you enjoy a refreshing glass of craft ale then perhaps you can help us create our anniversary brew. To help celebrate the 75th anniversary local micro-brewery Lord Conrad's is working with us to make a new ale called the i75. The plan is to create the new recipe in July, brew the ale in August, ready to share a drink in September. Bottles of i75 Ale will go on sale as part of the Impington 75 Festival from September onwards. Those with an interest in brewing can buy tickets to be part of the creation team, take part in the brew day or attend the launch and tasting event. Find out more at www.impington75.wordpress.com/i75-ale/

Get involved

If you have ideas to share or can spare some time to support the Impington 75 Anniversary please get in touch. During the anniversary weekend we will be looking for helpers as well for various events through the year. The College is also keen to hear from clubs, organisations and societies who would like to share what they do with a wider audience.

To find out more please contact Amy Wormald, Development and Engagement Manager at Impington Village College on Impington75@impington.cambs.sch.uk or 01223 200423
www.impington75.org.uk

Waterbeach Colts F.C.



Annual Youth Festival of Football and Beer Festival

The second Bank Holiday weekend in May sees the return of the Annual Youth Festival of Football and Beer Festival for its eleventh year.

The Festival of Football involves teams aged from Under 6 to Under 15. It takes place on the mornings of Saturday 24th (U6-U10) and Sunday 25th May (U11-U15) from 9am until 1pm. Please come along and support the teams, offer encouragement all the way, but please remember the ethos of the Club has always been and will always be *"Let the Children Play"*.

The Club has had a lot of requests to start a ladies team linked to the colts so this year we are having a ladies "Taster" match on the Saturday afternoon. If you are interested in taking part, regardless of experience, please contact Gary Fletcher (01223 566687 / 07789747347 or fletchergary@hotmail.co.uk) and let him know you will be attending, just so we know how many players we will have. Go on give it a go!

As usual the Beer Festival will offer a superb range of Real Ales sourced locally and from further afield together with alternative beverages wine, cider, lager etc. for those who prefer a different tippie. There is entertainment for all, Waterbeach cricket team are playing Saturday afternoon and we have live music Saturday evening and Sunday afternoon. Opening times are;

<i>Friday 23rd May</i>	<i>6.00pm to 10.30pm</i>
<i>Saturday 24th May</i>	<i>1.00pm to 10.30pm</i>
<i>Sunday 25th May</i>	<i>1.00pm to 9.00pm</i>

Funds raised from the event help the football club keep costs to the players to a minimum and in the past also make donations to other local organisations involving young people such as the Scouts, Playgroups and Youth Club. So please come along and support the event.

Jazzercise

Wow! Life is too busy for boring workouts, so we have.....Body-blasting music mixes with 60 minutes of sweating, smiling and laughing, through Pilates, yoga, and kickboxing moves. This is Jazzercise!

We are at Waterbeach School Tues/Thur 6.45pm and 8pm and also Sat mornings 10am. Jazzercise has been in the village for around 20 years!

Look out for us at the Feast on the 7th June and why not come and join in!

Some of our students attended the UK London Fitness Weekend in March and had a blast with over 500 Jazzercisers around the UK. I attended our UK conference in April and am proud that Waterbeach is on the Map, UK and worldwide! I am going to get a taste of Jazzercise in Italy soon.

We welcome all new students and offer a first class free.

Facebook.com/jazzercsiewaterbeach

Bev Tumber Class Instructor

Summer at the Museums 2014

Hands-on family fun in Cambridge and beyond 24 Jul – 3 Sept 2014

This summer, family fun and adventure are just around the corner as museums in Cambridge and beyond offer a jam-packed programme of creative activities, events and trails. With 20 local venues presenting an exciting mix of drop-in and bookable things to do, the annual Summer at the Museums has heaps of happenings to help you get the most out of the holidays.



From taking part in a night time bat walk at Cambridge University Botanic Garden, building rockets at Cambridge Museum of Technology or meeting a Stone Age man at the Norris Museum, this year's Summer at the Museums Calendar is full of events and activities to keep everyone entertained. Whatever's happening, the amazing collections across our local museums make them the perfect place to visit at any time. For fun tips and activities while you are exploring, pick up a FREE Museum Scrapbook from any participating venue. Calendars and Scrapbooks are available from all participating museums and collections, or can be downloaded from www.cam.ac.uk/museums/summer

Cambridge venues:

Cambridge Museum of Technology
Cambridge Science Centre
Cambridge University Botanic Garden
Fitzwilliam Museum
Kettle's Yard
Museum of Archaeology and Anthropology
Museum of Cambridge
Museum of Classical Archaeology
The Polar Museum
Sedgwick Museum of Earth Sciences
Whipple Museum of the History of Science

Further afield:

Burwell Museum & Windmill
Cromwell Museum, Huntingdon
Ely Museum
Farmland Museum and Denny Abbey, Waterbeach
Norris Museum, St Ives
Ramsey Rural Museum
Saffron Walden Museum
Stained Glass Museum, Ely
Wisbech & Fenland Museum

Accessing Adult Social Care

Who to contact, where to find information

Social Care is personal and practical support to help people live their lives by supporting them to maintain their independence and dignity and ensuring they have choice and control over the support they receive. Many people don't think about social care until they or someone they know need support, and then find they are unsure about where to find information or how to access the services they need.

What should I do if I think I or someone I know may require social care support?

Adult social care provides advice and services to people who may need help because of their age, physical disability, sensory impairment, learning disability or a mental health issue.

The first step to accessing services is to arrange an assessment by adult social care to establish your specific needs. This is free, irrespective of your income, and available to all. It will determine if you are eligible for a Personal Budget – an allocated sum of money with which to plan the support you need. Alternatively, your circumstances may mean you are classed as a 'self-funder' with the means to pay for your care.

Getting in touch

Adult social care customer services are the initial point of contact for all social care enquiries. The trained staff knows about the services available and can offer advice on who else may be able to help. Call them on 0345 045 5202. When you contact customer services they will ask you for some basic details, including basic financial information. The aim is to maximise your independence and ensure you receive the support you need. This could include information and advice, re-ablement – individually tailored short-term support to help you become as independent as possible following an illness or operation, or a social care assessment.

If you think you may need help with mental health issues you should contact your GP in the first instance.

More information

If you have access to the Internet the Your Life, Your Choice website at www.yourlifeyourchoice.org.uk provides more information about the assessment process and accessing care and support for anyone looking for information for the first time. Staff and volunteers in your local library can also help you to access the information online.

Fire and Rescue Service



THE fire service needs volunteers in your village!

Cambridgeshire Fire and Rescue Service Community Champions scheme has been running for two years and now more volunteers are being recruited.

The Champions promote fire safety in their communities by attending local events to promote fire safety, talk to local groups and organisations, and also refer vulnerable people to CFRS for home fire safety visits.

So could you help your community stay fire safe?

Find out more by contacting Rachael Brown on 01353 865037 or email Rachael.brown@cambsacres.org.uk.

Waterbeach WI



Our March meeting with the Hi Five A Capella Group from Cambridge Harmony Choir was huge fun. We would certainly recommend joining their choir if you enjoy singing. What a contrast with our April meeting when we were spell-bound by Eva Clark's story of her mother's survival in various concentration camps in WWII. Eva was born just a few days before the American forces freed them. Her mother died only last year at the age of 96 and Eva gives talks around the country, mainly to schools and colleges, to raise awareness of genocide and how it is still prevalent in the world.

If you would like to join us on Thursday June 12th for Chris Clarke's talk on 'My Life as a Theatrical Make Up Artist', Thursday July 10th for 'Dogs for the Disabled' by Marie Carden or Thursday August 14th for a barbecue and quiz, you would be most welcome. Our meetings are held at St. John's Church Room at 7.30pm on the second Thursday of each month.

Contact: Sheila Lynn 01223 860948

Waterbeach United Charities (Reg No 201528)

Waterbeach United Charities provide financial support or pays for services that help to alleviate individuals who are "in need or distress" who are residents of Waterbeach Parish.

Electric Wheelchairs - We have a number of electric wheelchairs for those in need. If you would like to be considered please let us know.

Distress Grants - The Trustees would like to hear from individuals who may be *in need or distress*. If you think we could help, and to find out whether you are eligible for assistance, whether it be loaning equipment to you, or providing financial support, please contact:

All personal applications are confidential.

Mrs S Wilkin, The Secretary, Waterbeach United Charities
25 Payton Way, Waterbeach, Cambridge CB25 9NS

Re-cycling Open Day

Have you ever wondered what happens to your waste after it's been collected from your home?

This year's annual Re-cycling Open Day on Saturday 21 June at AmeyCespa's site, on the A10 at Waterbeach, will take you on a 'Ride through Waste' - following the path of your waste and recycling from collection to processing and beyond.

With the Tour de France coming to Cambridge shortly after the event, the day will include cycling-themed activities for all the family including recycling activities with Outspoken Cycles and bike repair workshops.

Visitors can also enjoy guided coach tours of the site, walking tours of the new Materials Recycling Facility and vehicle displays. Anyone bringing household batteries for recycling can enter a draw to win bike lights.

Mark Shelton, Waste Education Manager for AmeyCespa, said: "The Recycling Open Day is a great chance for everyone to find out more about what happens on our site, as well as learning how they can recycle or re-use even more of their waste.

"The day is always great fun for all the family so I would urge people to come along and find out more about what happens to their waste, especially if they have never been to the site before."

The Open Day is a joint venture between AmeyCespa and Cambridgeshire County Council. Entry is completely free and the event is open from 10am to 4pm. For more information call (01223) 861010.

Waterbeach United Charities (Reg No 201528)

Student and Apprenticeship Grants

Waterbeach United Charities invite applications from individual students who might benefit from some help with their studies. We consider grants for equipment for students undertaking vocational training, tools, clothing, books etc; or grants for students who may appreciate help with the costs of books. We also consider applications for help with travel costs.

Students Grants are only awarded once a year, in September and applications need to be made by 1 September 2014. No applications will be considered after this date. The trustees will consider all applications at a meeting in early September. If you think we may be able to help please complete an application form, obtainable by writing to the address below. We will acknowledge your letter and send you an application form.

All personal applications are confidential.

Mrs S E Wilkin, The Secretary, Waterbeach United Charities
25 Payton Way, Waterbeach, Cambridge CB25 9NS

Advice from Trading Standards

Be cautious of traders who call at your door

In the last 5 years it is estimated that £1 million has been paid to rogue traders by older residents living in Cambridgeshire. In most cases the rogue trader will have called at the customer's door offering to do work on their house or garden, and will have overcharged for unnecessary and shoddy work.

These are serious crimes, in some cases costing the customer their life savings and often leading to them being fearful in their own homes.

At Trading Standards we would like to make you aware of the tell-tale signs of rogue traders to help you avoid them. We would also urge you to pass this advice on to elderly friends and relatives.

Rogue traders typically:

- 1. *Call at the door offering services*** such as replacing a loose roof tile, roof or gutter cleaning, gardening, house maintenance, jet washing, driveway paving and tree felling.
- 2. *Engage with the customer to win their trust*** e.g. claiming to have been before, claiming they are working up the street etc. They will seem very friendly and chatty.
- 3. *Start with a small job*** such as gutter cleaning and then claim further work is needed. This subsequent work will not be quoted for and will run into thousands of pounds.
- 4. *Make fraudulent claims*** e.g. moss growth on a roof causes severe damage and needs to be washed off, painting a roof is necessary to protect it.
- 5. *Fail to give you written notice of your right to cancel*** which is required for most contracts agreed at home.
- 6. *Use intimidation to extort money*** and often take the customer to a bank or cash point to withdraw cash (a criminal offence).
- 7. *Return again and again*** demanding further payment for bogus reasons e.g. claiming that VAT has not been paid.

If you think rogue traders are currently at your property, are in the vicinity or are due to return, please contact the police on 999. If you think rogue traders have done some work for you but have left, contact our advice partner, Citizens Advice Consumer Helpline, on 08454 040506 for advice.

In terms of finding a trader you can trust, seek recommendations from friends and family where possible. Alternatively, use a trader on our Buy with Confidence approved trader scheme who will have been thoroughly checked by us. To find an approved trader visit www.buywithconfidence.org.uk, call the Citizens Advice Consumer Helpline (above) or visit your local library, where staff will be able to look up traders on the scheme for you. We would always recommend getting three quotes to ensure the price is competitive.

‘Young at Heart’ Party



INVITATION

All residents of Waterbeach, Landbeach and Chittering aged 60 plus are invited to the
Waterbeach Community Association ‘Young at Heart’ Party on

Thursday 26th June 2014

from 1.30pm until 5.00pm (*Doors open 1.30pm performance starts 1.45pm*)

at Waterbeach School Hall

There will be entertainment, afternoon tea and a raffle. This is all *free*, but we do ask you to return the slip below to book a place. Please return the slip below to Mark Clack, 5 Spurgeons Avenue, Waterbeach, CB25 9NU or to Jacqui Rabbett, 9 Providence Way, Waterbeach, CB25 9QH by **Friday 30th May 2014**.

Regrettably we cannot provide transport, so please talk to your friends to arrange a lift. If you will be in a wheelchair for the afternoon, please let us know so that we give you plenty of room.

Unfortunately we are unable to cater for special dietary requirements other than vegetarian.

Please note that as the event will be held during a normal school day there will be no admission before 1.30pm and entrance will be via High Street only, as the back gate on Way Lane will be locked

For further information Tel. 01223 860993

.....

‘YOUNG AT HEART’ PARTY- PLACE CONFIRMATION

Please reserve place(s) at the ‘Young at Heart’ Party on **26th June 2014**

Name(s) :

Contact Address

.....

.....

Telephone.....Email

Please tick if you will be in a wheelchair ☐

Please tick if vegetarian ☐

*Please return by **Friday 30th May 2014***

Cambridge Open Studios



Cambridge Open Studios has 272 artists committed to opening their studio doors to the public this July – the most ever to be involved in this region. One of the longest-standing open studios events in the country, COS dates back to the 1960s and appears to be getting more popular every year.

Over the weekends of July 5/6, 12/13, 19/20 and 26/27, artists of all kinds throughout Cambridgeshire will open their doors to members of the public, completely free, and share a few of their artistic secrets. Visitors will have the opportunity to purchase original works of art, and in some cases prints, greetings cards or postcards, though there will be no pressure to buy. They can also speak with artists about their work, or even see works in progress, to discover their techniques.

The aim of COS is, and always has been, to promote the making of original arts and crafts and to forge a lasting relationship between local people and local makers and artists. Over 400 artists are members of COS, and include painters, sculptors, jewellers, potters, glassworkers, blacksmiths, photographers, illustrators, those who work with textiles and many, many more. Covering the whole county, the Open Studios initiative includes outlying towns and villages as well as the city itself, and offers a unique glimpse into the creative process. COS wants to demystify the world of art, bring artists together with local people, and offer an unusual insight into a fascinating unseen world. It also makes for an unusual, illuminating and highly entertaining day out over a summer weekend. COS is a friendly, welcoming and fun experience. Artists only participate if they want to, so the public should always feel very welcome. It's a fantastic opportunity to gaze at amazing treasures and if you wish, speak to the artist that created it, in a relaxed and friendly atmosphere.

Participating studios will be open from 11am-6pm though it is worth mentioning that not all studios are open on all the dates so visitors should check the website www.camopenstudios.co.uk in advance. Some will offer refreshments though this is by no means compulsory for artists so people are advised to plan pit stops on longer routes!

Visitors may even like to pick out a few artists from the guide who are exhibiting and create their own 'studio tour', not forgetting the villages too. Often members are exhibiting within range of a good pub lunch or tempting teashop, so a good route can be planned to make the perfect day out.

Free yellow guide books are distributed throughout Cambridgeshire during the preceding months, the website is always being updated with artist news and insights, and visitors are advised to look out for the yellow flags during the event itself which indicate an open studio.

Visit the website: www.camopenstudios.co.uk or follow @CamOpenStudios on Facebook or Twitter

Matron Lucy Maud Toller

Queen Alexandria's Imperial Military Nursing Service

The story of a military nurse from Waterbeach

Lucy Maud Toller was born on the 8th of November 1874, she was the third of four daughters born to Richard and Sarah Toller of Winfold Farm, Denny Abbey, Waterbeach.

Lucy had two older sisters, Sarah who was born in 1870 and Edith who was born in 1872, Mabel was the youngest being born in 1879.

The Toller family were Baptist preachers, Lucy's father Richard was a farmer owning a farm of 600 acres and employing 15 men and 8 boys, on land that is now occupied by Waterbeach barracks.

The Toller's were obviously a well-off family, so much so that they could afford a governess and private school education for their daughters.

Things seem to have gone into a bit of a decline with the early death of Richard (aged 56) on the 10th of June 1884, as by the time of the 1891 census Sarah with two of her daughters Lucy and Mabel, had moved from the farm at Waterbeach and are running a lodging house in Marine Parade Lowestoft; at this point in time Lucy (who is 16) is employed as an apprentice dressmaker.

Moving forward six years to 1897 and Lucy is now 22 years old and has already taken the path toward her lifelong career of nursing by working at the St. Marylebone Infirmary London as a staff nurse, a position she keeps for three



Lucy Maud Toller

years before leaving in March 1900.

After leaving St. Marylebone Lucy works as a Hospital nurse at the Lauriston Royal Infirmary at Edinburgh Scotland, until May 1901; from May 1901 until October 1902 she worked as a sister at the South Bank Hospital



St. Marylebone Infirmary

Rochester and from there went to the South Western Hospital, Stockwell, as a charge nurse until she applied to join the QAIMNS in April 1904.

Eight months prior to applying to the QAIMNS, in August 1903, Lucy's mother died at the age of 63; bequeathing Lucy and her three sisters effects to the value of £105 1s 2d (a sum which would be equivalent to £11,000 today).

On the 21st of May 1904 the secretary of the Army council approved of the

appointment of Lucy to the QAIMNS as a staff nurse.

Lucy's appointment to QAIMNS Staff Nurse was posted in the London Gazette of July 26 1904.

Nursing care for British soldiers came into being during the Crimean War 1853 – 1856.

Florence Nightingale was largely responsible for the first effective nursing service to care for the wounded and sick soldiers of the Crimean campaign. In 1860 a professional army training school was opened at the Royal Victoria Hospital at Netley near Southampton; by 1866 nurses had been appointed to all military general hospitals at home and overseas.

In 1881 all the army nurses were brought together and the Army Nursing Service was formed.

Within three years every military hospital (that had more than 100 beds) had a full staff of sisters and nurses (this included hospitals in Gibraltar and Malta).

In 1902 the Queen Alexandria Imperial Military Nursing Service (QAIMNS) was formed by Royal warrant with Her Majesty Queen Alexandria as its president until her death in 1925.

QAIMNS uniform

The standard QAIMNS service/ward uniform consisted of a long starched white

muslin head veil, the shoulders were covered by a red cape which bore the QAIMNS badge on the right side, with any (medal) ribbons for awards won, sewn onto the left side; the actual dress was grey with long sleeves with solid scarlet cuffs for Matrons, two one inch scarlet bands with white cuff bottoms for a Sister and plain sleeves for a Staff nurse.

As well as their ward/service uniform QAIMNS nurses also had their own walking out dress; this uniform (which was also the same colour grey as the ward uniform) had a tight scarlet collar with the QAIMNS badge on each side.

The scarlet cape was not worn with the walking out dress although the cape badge was worn on the right and medal ribbons were worn on the left as per the service/ward uniform; the walking out uniform was finished off with a brimmed hat which bore a scarlet, grey and white ribbon which was tied in a bow at the front.



*Sister Laura Elizabeth James
QAIMNS wearing her cape badge on
her right and medal ribbons on her left.*

This is an extract from a longer article written by Martin Tingey about Lucy Maud Toller. The full version can be found within the Summer 2014 online edition of Beach News at www.waterbeach.org If you are unable to access the internet and would like to read the full article please leave a message on 01223 476601 giving your name and address and we will arrange to provide a printed copy.

Lucy officially joined the QAIMNS on the 4th of July 1904, three days later she was posted to the Queen Alexandria Hospital Portsmouth, which at the time of Lucy's posting was a brand new building having been part completed; it was built as a military hospital in 1904 – 1908 replacing an earlier hospital that had stood in Lion Street Portsea, Portsmouth.

On the 15th of August 1905, whilst she was stationed at Portsmouth, Lucy was promoted to Ward Sister.

From its inception until it was phased out in 1944 the lowest rank in the QAIMNS was Staff Nurse.

Although nurses of the QAIMNS were treated as officers and could be promoted or demoted they were not commissioned officers of the British army, a situation that was to continue until it changed in 1949.

QAIMNS ranks and their army equivalent were: Sister = Lieutenant, Senior Sister = Captain, Matron = Major, Principal Matron = Lieutenant Colonel, Chief Principal Matron = Colonel, Matron-in-chief = Brigadier.

After eighteen months spent at Portsmouth, on the 5th of January 1906 Lucy is posted to London and the newly built Millbank Hospital.

Millbank Hospital was built to the 'Nightingale' pattern and was opened in 1905 by Edward VII and Queen Alexandra; it was situated by the Thames in SW1 London and was adjacent to the Tate Gallery. During WW1 it was an army hospital for the wounded, caring for cases of shell shock, the effects of gassing, frostbite and trench fever.

After WW1 it was enlarged to 200 beds and became the post graduate school for medical officers of the Royal Army Medical Corps (RAMC); at the time it was the only British institute teaching military surgery.

Lucy is on the staff of Millbank Hospital for twenty-one months until the 2nd of October 1907 when she is posted for duty on board the SS Plassey sailing from Southampton.

Lucy's posting to the Plassey is short lived as by the 21st of November 1907 she is back in Britain; a day later she is posted back to London and Millbank Hospital, where she stays for four months before being posted on the 9th of March 1908 to Connaught Hospital in Aldershot.

Connaught Hospital was named after H.R.H Duke of Connaught, who was the General Officer Commanding (GOC) of Aldershot from 1893 – 1898.

For a while Connaught was a specialist Venereal Disease hospital for men with 300 beds.

After eighteen months at Connaught Hospital Lucy is posted on the 15th of September 1909 to the Military Hospital in Hong Kong.

Hong Kong Hospital was a large red brick built structure located at Bowen Road which overlooked Hong Kong harbour; it was constructed with two

three storey wings with a central admin block between 1903 and 1906 and had enough space for 150 beds.

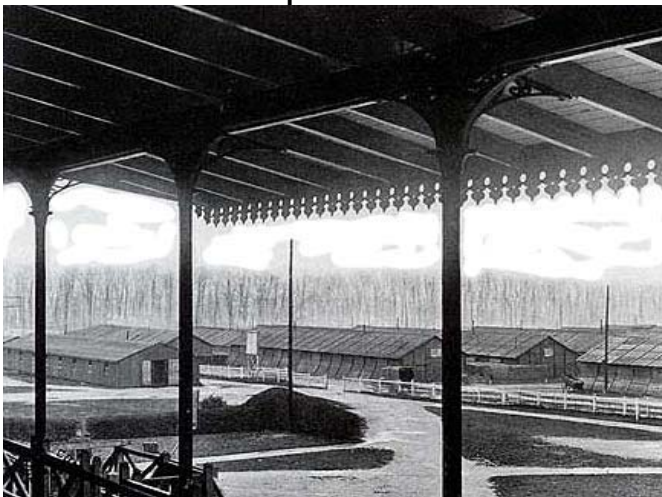
Hong Kong Hospital had been officially opened on the 1st of July 1907 and remained open as a British Army Hospital until its closure as such in 1967.

Lucy's stay in Hong Kong lasts for just over three years before she arrives back home on the 21st of December 1912, a day after arriving back home Lucy is granted thirty-eight days leave.

On the 30th of January 1913 Lucy is posted to Tidworth Hospital which at the time was just six years old; built in 1907 it held between two-hundred and three-hundred beds and was located right by the army training grounds of Salisbury Plains in Wiltshire.

Lucy spent fifteen months at Tidworth before she was posted on the 16th of April 1914 to Netley Military Hospital near Southampton.

Within four months the world was at war, with the outbreak of WW1 Lucy was mobilized on the 17th of August 1914 and was posted to Genoa, Italy, to number 11 General Hospital; from No 11 Gen Hospital she was posted to No12 Gen Hospital which was based in Rouen in France.



No 12 General Hospnital at Rouen



Interior (ward) of No 12 General Hospital

At the outbreak of the First World War in 1914 there were just under 300 regular members of the Q.A.I.M.N.S; due mainly to its (antiquated and) strict entrance rules, potential candidates had to be single, aged over 25 years old and of a high social status.

With the effects of modern warfare and the massive amount of casualties coming in from the battlefields of France and Flanders, in order to keep up, the strict entrance criteria had to be relaxed with the result that 10,000 qualified nurses joined the Q.A.I.M.N.S reserve which for the first time in its history included married women and those of a lower social class.

During the course of WW1 the Q.A.I.M.N.S provided nurses in every theatre where their services were required, with a branch of the service being formed in India.

Base Hospitals

During WW1 there were two types of Base Hospital known as Stationary and General Hospitals;

both of these facilities were large and were often centred around an existing building, i.e. a hotel.

Typically those in theatre (behind the lines) would be sited near a railway line in order to receive casualties easily, and would be in easy reach of a port so that the most severe cases could be evacuated back to Britain for long-term treatment.

After serving for over a year at No12 General Hospital in Rouen, Lucy is posted to No 24 General Hospital at Etaples, France, on the 21st of October 1915; six weeks after her new posting Lucy is temporarily promoted to 'acting Matron' (possibly due to a shortage of nurses of this rank).

Saturday January the 1st 1916, Lucy is mentioned in despatches for 'gallant and distinguished service in the field'.

Reported in the London Gazette thus:

War Office, 1st January, 1916.

The following despatch has been received by the secretary of state for war from the Field Marshal Commanding-in-Chief the British Army in France:-

General Headquarters, 30th November, 1915.

Sir,

In accordance with the last paragraph of my despatch of the 15th October, 1915, I have the honour to bring to notice the names of those whom I recommend for gallant and distinguished service in the field.

I have the honour to be,

Sir,

Your obedient servant,

J. D. P. FRENCH

Field-Marshal, Commanding-in-Chief

The British Army in France.

Lucy's name appears way down the list under 'Nursing service' on page 69, dated 1 January 1916.

On the 20th of June 1916 Lucy reverts back to her normal rank of Sister and is posted to No 35 Casualty Clearance Station at Doullens, France.

Casualty Clearance Stations (CCS)

British CCS were used in all the major theatres during WW1; they were set back from the front line and were often located by railway lines in order to facilitate the ease of movement of casualties from the battlefield(s). Casualty Clearance Stations were set up to treat the wounded effectively and quickly,

their main aim being to send the man back to the front as soon as possible; or if not, then enable him to be evacuated to Base Hospital.

A lot of Casualty Clearance Stations were temporary sites consisting of tents, whilst others could be commandeered buildings (often war damaged with no windows or doors).

Casualty Clearance Stations often changed their location, especially in the wake of an attack by the enemy.

No 35 Casualty Clearance Station that Lucy had been posted to moved to Doullens in March 1916, remaining for the rest of the year with CCS 11, 19 and 41 until they were replaced by the 3rd Canadian Stationary Hospital.

The 27th of December 1916, the day before she left for her new posting to No 9 General Hospital Rouen, Lucy is promoted back to 'acting Matron'.

Four days after her posting to Rouen, Lucy is Gazetted again, this time she has been awarded the Royal Red Cross (RRC) medal 1st class, a prestigious award given out in recognition for exceptional deeds; the announcement in the London Gazette for the 1st of January 1917 reads:

The undermentioned ladies are awarded the decoration of the Royal Red Cross, in recognition of their valuable services with the Armies in the Field.

Lucy's name appears on the list of nurses under 'Sister', she is awarded the RRC 1st class whilst 'acting Matron'.

The Royal Red Cross (RRC) Medal

The medal was first instituted on the 27th of April 1883 by Queen Victoria.

Recipients had to be fully trained nurses of an officially recognised nursing service, either military or civil.

The recipient had to have shown exceptional devotion and competence in the performance of their nursing duties over a continuous and long period, or to have performed an exceptional feat of bravery and devotion to duty at their post.

After six months spent at No 9 General Hospital Lucy is posted to No 39 Stationary Hospital, Rouen; this posting was to be another short term assignment as six months later, on the 23rd of December 1917, Lucy is posted to No 26 General Hospital at Etaples.

The British hospital site at Etaples had been established in June 1915, situated along the Eastern side of the river Canche and the railway that bordered it. Either side of the hospitals, to the North and South, was a large British military camp.

This very large site was home to no less than nine different hospitals: St John Ambulance Brigade, No 1 Canadian, No 6 BRCS (British Red Cross Society), No 23 General, No 24 General, No 26 General, No 46 Stationary, No 51 General and No 56 General.

Constructed in a straight line 1.5km long and running North to South and parallel with the railway line were the St John Ambulance Brigade, No 1 Canadian, No 26 General, No 23 General and No 24 General hospitals, with the personnel quarters for these hospitals running right alongside the railway line sandwiched between it and the hospitals. The personnel quarters were so close to the railway lines that to get any rest there was difficult due to the noise of the trains, which passed every ten minutes night and day!

The situating of a military hospital complex alongside a railway line and a military camp was not one of the wisest things to do as both are strategic targets during a war; this realization was brought home with devastating consequences on the 19th of May 1918 when the Germans began trying to bomb the railway line and its sidings.

During the first raid of May the 19th, between 10 and 12 German bombers managed to inflict serious damage and kill or wound around 300 patients. At No 26 General Hospital where Lucy was stationed there were only three casualties, two were nursing staff – Miss Marshall, VAD who suffered a slight head wound and Miss Draper, VAD who was slightly wounded on the wrist; the only fatality was a patient who was killed.

Structural damage to No 26 General Hospital was confined to the Sister's quarters being partly destroyed and one or two rooms situated near the railway sidings being rendered unfit for use.

As the German air raids continued the Hospital gardens were dug up to make air raid shelters.

After the first raid on the 19th of May there were nine other air raids between the 27th of May and the 10th of August.

A raid on the 31st of May destroyed the St. John Hospital with serious loss of life and a month later on the 29th of June No 51 General Hospital was hit.



St. John Ambulance Hospital after the raid of the 31st of May 1918 on Etaples

During the height of the German attempt at bombing the nearby railway (and its sidings) at Etaples Lucy is given, what must have been a very welcome, fourteen-days leave from the 5th until the 19th July.

On the 30th of July 1918 Lucy's name appears in the London Gazette for the fourth time; she has been awarded the Military Medal for bravery for her actions in rescuing and moving wounded staff from the wrecked nurses quarters which was bombed on the 19th of May.

The citation for Lucy's Military Medal reads:

Sister (A./Matron) Lucie Maud Mary Toller, R.R.C., Q.A.I.M.N.S.

For gallantry and devotion to duty during an enemy air raid. When the Sisters quarters were wrecked and nurses wounded, Sister Toller collected the staff and placed them in comparative safety. By her fine example she undoubtedly saved life.

Lucy arrives back in the U.K from France on the 13th of February 1919 and within two days is posted to the Military Hospital at Fulford Road, York, as Matron.

Five months later, on the 14th of July 1919, Lucy is working at No 39 Stationary Hospital at Ascq in France (Ascq is a village situated on the Marque river in Northern France, 7 Kilometres from Belgium), she is Gazetted for the fifth time with the award of the French Epidemic Medal in Vermeil (gilt).

The French Epidemic Medal

Was instituted on March the 31st 1885, after a serious outbreak of Cholera in Europe during which the King of Spain, Alfonso the XII died.

The medal was awarded between 1885 and 1962 to those who risked their lives in the fight against disease; the medal was awarded in four grades/classes – bronze, silver, vermeil (gilt) and gold.

The gold and gilt class could only be bestowed on persons who already held either the bronze or silver classes or had been admitted to the Legion of Honour.

Each medal was awarded with an official citation which gave the details of how/why the recipient had won it - the French Epidemic medal ceased to be awarded in 1962.

Lucy undoubtedly was awarded the Epidemic medal for her work during the flu pandemic (January 1918 – December 1920) which killed an estimated 50 – 100 million people worldwide (3% - 5% of the world population).

September the 19th 1919 and Lucy takes some well earned leave (her first for fourteen-months), and travels to Norway!

After twenty-six months at No 39 Stationary Hospital Lucy reverts back from acting Matron to Sister and a week later, on the 19th of September 1921, is posted to 36 Casualty Clearance Station (CCS) in Cologne, Germany;

replacing a Territorial Force Nursing Sister (TFNS) who is returning to the UK for de-mobilization.

From Cologne Lucy is once again (the last time being 30/1/13) posted to Tidworth Hospital in the UK on the 18th of June 1922; after two months at Tidworth Lucy takes a month's leave, returning on the 31st of August. A month later on the 26th of September, Lucy is on the move again, being transferred to Millbank Hospital where she had last worked fifteen-years earlier.

Lucy's stay at Millbank lasts just over a week before she is posted to Turkey, embarking for Constantinople on the 5th of October and arriving in Kelia, Turkey on the 22nd of October 1922;

once in Turkey Lucy is posted to No 21 Stationary Hospital at Kelia on the 23rd of October.

Lucy's stay in Turkey lasts just seven months before on the 25th of May 1923, G.O.C. (General Officer Commanding) Turkey is requested to send Lucy home asap, she is ordered to travel overland proceeding to 'B' section No 82 General Hospital Constantinople on the 9th of June, prior to coming home.

Lucy proceeds home to the UK on the 12th of June 1923, arriving back and re-joining Tidworth Military Hospital on the 18th of June 1923.

Lucy's third stint at Tidworth comes to an end on the 10th of September 1924 when she is posted to the Belfast Military Hospital Northern Ireland as a replacement for nursing Sister Miss P. Steele.

Around five weeks into Lucy's new posting to Belfast, on the 31st of October, she is promoted to Matron.

Whilst at Belfast Lucy has the misfortune to have a serious accident when on the 27th of February 1926 the handle of the hall door to the Sister's quarters came away in her hand, and she was subsequently thrown down the steps by the door being caught by a gust of wind.

The fall and awkward landing broke Lucy's right tibia and fibula which resulted in eight months off work and an army board of inquiry into the accident.

The army board of enquiry into Lucy's accident commenced two days after, on the 1st of March, at the Belfast Military Hospital. The proceeding were presided over by H.E.M. Douglas, Colonel and Officer Commanding, Royal Army Medical Corps, Northern Ireland District.

During the inquiry several witnesses were called, the first was 17459 Driver L.J. Pick, R.A.S.C. he stated that: -

On the 27th February, 1926, at 5.30pm I proceeded to the sister's quarters to convey the Matron (Miss Toller) to Hollywood.

Whilst placing a chair in the back of the ambulance I heard a shout and on looking round I saw the Matron lying on the ground at the bottom of the steps, leading from the house.

I called for assistance and some sisters came – having bandaged her leg we placed her on a stretcher and conveyed her inside the house.

I then proceeded to the Hospital where I informed the orderly medical officer.

Two other witnesses were called, a staff nurse Miss P. Marchant and Captain C.P. Chambers of the Royal Army Medical Corps (RAMC); Captain Chambers examined Lucy's leg and determined that both bones were fractured before putting her leg in splints and removing her to hospital.

The army report on “Accidental or self-inflicted injuries” dated 2nd of March 1926, stated that Lucy's injuries were: - *Serious and likely to interfere with her future efficiency.*

The opinion of the board of inquiry into Lucy's accident, dated 8th of March 1926, was summed up by Colonel Douglas thus: -

Having carefully considered the evidence, I am of the opinion that Matron Miss L.M. Toller, RRC, MM, QAIMNS, met with this accident through no fault of her own and that she was on duty at the time.

Despite the board of enquiry coming down firmly on Lucy's side, the army had other ideas and had decided that Lucy had no claim for disability compensation.

While all the backstage wrangling was going on concerning Lucy's case, the army medical board had passed her 'fit for service' on the 22nd of October 1926 and she returned to duty three days later at Belfast.

On the 31st of March 1927 the Matron-in-chief wrote to the General Officer Commanding, Northern Ireland District, requesting that Lucy hold herself in readiness to embark on a tour of duty in Malta at an early date; in the same letter the Matron-in-chief requested that a medical certificate be forwarded to her regarding Lucy's fitness, or otherwise, for such duty.

The General Officer Commanding promptly wrote back to the Under Secretary of State at the War Office, saying that Lucy was not at that time fit for foreign service and enclosed her medical certificate which read: -

This is to certify that Matron, Miss L.M. Toller R.R.C. M.M. Q.A.I.M.N.S., is due to have the plate removed from her right leg next week. She will be confined to bed probably 3 weeks, and will not be fit for foreign service for at least 3 months from the date of the operation. She is suffering from periodic attacks of Urticaria since she fractured her leg, and, in my opinion these attacks would be aggravated by service abroad.

On the 13th of April 1927 Lucy is admitted to the Military Hospital Belfast to have the plate in her leg removed.

Five months later, in a letter to Lucy's legal counsel on the 25th of September 1927, the army flatly stated its case as thus: -

Sir, I am directed to acknowledge the receipt your letter No 38/139 dated 16th

instant and in reply to inform you it has been decided that any disability resulting from the injury sustained by Matron Miss L.M. Toller, RRC, MM, Queen Alexandra's Imperial Military Nursing Service cannot be regarded as attributable to military service. (letter No 2/T/193).

Understandably, Lucy was not pleased with this outcome, particularly as she was on duty at the time the accident occurred; in a letter of the 25th of October 1927, to the Commanding Officer of the Military Hospital Belfast, Lucy wrote: *Sir, With reference to A.D.M.S., N.I.D. Letter 2/T/193 (A.M.D.4) dated 26-9-1927.*

I cannot understand why it has been decided that any disability resulting from injury sustained by me, cannot be regarded as attributable to Military service. My duties necessitated that I should leave my quarters, and by leaving my quarters to perform my duties I met with the accident.

I therefore wish to appeal against the decision given.

On the 3rd of November 1927 the General Officer Commanding Northern Ireland District wrote to the Under Secretary of State at the War Office, London, in his letter he stated: -

Sir, With reference to War Office letter No. 2/T/193. (A.M.D.4.) dated 26th September, 1927, I have the honour to forward the attached appeal from Matron Miss L.M. Toller, as to the decision convey-ed in War Office letter under reply.

The under Secretary of State replied:

I am unable to recommend any favourable reconsideration of this case as I am aware the policy exists, that, individuals proceeding from their place of residence to place of duty are not regarded as being on duty unless some exceptional circumstances have arisen.

With the above letter, Lucy's attempt at getting (rightful) compensation for her accident were completely sunk and she had to let the matter drop.

Two years and three months after the (successful) operation to remove the plate in her leg, Lucy decides to call it a day and submits her resignation on the 16th of July 1929 with effect from the 19th of August 1929. In her resignation letter Lucy asked permission to retain her QAIMNS (cape) badge, which was granted.

On the 19th of August 1929, after 25 years and 43 days loyal and distinguished service, the now 55 year old Lucy Toller retired with an annual pension of £170.00.

Lucy had a long retirement of 33 years before dying in Southbourne, Bournemouth aged 88 on the 15th of March 1962.



Lucy's actual set of miniature medals: From L to R: Royal Red Cross 1st class, Military Medal, 1914 (Mons) Star and clasp, British War Medal 1914-1918 and Victory Medal 1914-1919 with MID oak leaf.

Martin Tingey 2014

Sources/credits:

Wikipedia, the free encyclopedia.
 British Military History.
 Scarlet Finders.
 Scarlet Finders.
 Scarlet Finders.
 The Long long trail.
 This Intrepid Band.
 Etaples 1917.
 N.Heritage List for England.
 QAIMNS Uniform-Looking
 for the evidence.
 QARANC.
 Lucy's medals by kind permission.
 Photographic Images.
 Medal Hound

en.wikipedia.org/wiki/1918_flu_pandemic
www.britishmilitaryhistory.co.uk/documents.php?
www.scarletfinders.co.uk
www.scarletfinders.co.uk/90.html
www.scarletfinders.co.uk/91.html
www.1914-1918.net/hospitals.htm
greatwarnurses.blogspot.co.uk/2012/12/st-john-ambulance
www.jramc.bmj.com/
list.english-heritage.org.uk//resultsingle.aspx?
www.ww1australianwomen/qaimns-unifo...
www.qaranc.co.uk
 Dixon Noonan and Webb Auctioneers.
www.google.co.uk
www.themedalhound.com/frenchmoh/

COMMUNITY ASSOCIATION MEMBERS

1 ST WATERBEACH BROWNIES	Tiffany Langton - 01223 862548
1 ST WATERBEACH GUIDES	Holli Bielby - 01223 528383
1 ST WATERBEACH RAINBOWS	June Stephen - 07956 949964
32 ND CAMBRIDGE (WATERBEACH) SCOUT GROUP	William Moon - 01223 440259
BEACH BOWLS CLUB	Tony Reuben - 01223 861001
BEACH SOCIAL CLUB	Geoffrey Donovan - 01223 860033
COMMUNITY ASSOCIATION CHAIRPERSON	Jacqui Rabbett - 01223 860993
COMMUNITY ASSOCIATION SECRETARY	Pam Clack - 01223 476601
DENSON CLOSE SOCIAL CLUB	May Beckett - 01223 660475
HAPPY FOLKS CLUB	Stuart Atkins - 01223 862674
LANDBEACH BELL RINGERS	Barbara Le Gallez - 01223 860283
ROYAL BRITISH LEGION - WATERBEACH & LANDBEACH	Norman Foster - 01223 474622
ST. JOHN'S CHURCH	Rev. Paul Butler - 01223 860353
THE WAY PROJECT	Julie Wentworth - 01223 861668
WASPS (WATERBEACH AFTER SCHOOL PLAY SCHEME)	Zoe & Wayne Badcock - 01223 861140
WATERBEACH & DISTRICT GARDENING CLUB	Jerry Cooper - 01223 574050
WATERBEACH ANGLING CLUB	Colin Brett - 01954 200956
WATERBEACH BADMINTON CLUB	Norman Setchell - 01223 862404
WATERBEACH BAPTIST CHAPEL	Martin Ensell - 01223 862494
WATERBEACH BRASS	David Pell - 01223 860396
WATERBEACH COLTS F.C.	Bernadette Sowden-Fletcher - 07752 868255
WATERBEACH COMMUNITY PLAYERS	Julie Petrucci - 01223 880023
WATERBEACH COMMUNITY PLAYGROUP	Jacqui Woods - 01223 440769
WATERBEACH DAY CENTRE FOR THE ELDERLY	William Bullivant - 01223 862506
WATERBEACH INDEPENDENT LENDING LIBRARY (WILL)	Maggie Crane - 01223 440560
WATERBEACH SALVATION ARMY	Wendy Brown - 01223 506217
WATERBEACH SCHOOL P.T.A	Lianne Parrett - 07476 778044
WATERBEACH TODDLER PLAYGROUP	Wayne Badcock - 07808 357729
WATERBEACH VILLAGE SOCIETY	Ray Rice - 01223 860663
WATERBEACH WI	Sheila Lynn - 01223 860948
WATERBEACH WIVES GROUP	Sheila Gill - 01223 861999

Other useful numbers:

BEACHES COMMUNITY CAR SERVICE	07807 875878
COUNTY COUNCILLOR	Maurice Leeke - 01223 441562
DISTRICT COUNCILLOR	James Hockney - 01223 441289 or 07958 389713
DISTRICT COUNCILLOR	Peter Johnson - 01223 560918 or 07947 475549
DOCTORS SURGERY – WATERBEACH	01223 860387
FIRE & RESCUE SERVICE - Non Emergency Calls	01223 376217
LANDBEACH VILLAGE HALL	Anne Bullman - 01223 860692
PARISH PATHS GROUP	D. Armstrong - 01223 861586
POLICE - Non Emergency Calls	101
ST LAWRENCE'S CATHOLIC CHURCH	01223 704640
VILLAGE CORRESPONDENT	Maggie Crane - 01223 440560
WATERBEACH PARISH COUNCIL	Parish Clerk - 01223 441338
WATERBEACH SCHOOL	01223 718988
WATERBEACH TURBARY CHARITY	Pam Gooding - 01223 861003
WATERBEACH UNITED CHARITIES	Pam Gooding - 01223 861003

*Come in and take a look!
You are most welcome...*

*Whats On 2014 available
on our website!*



*At the centre
of the Community*
www.beachsocialclub.com

2014 Club Charity



Girlguiding UK
girls in the lead



32nd Cambridge (Waterbeach)



*Memberships available
Function Room for hire*

sky SPORTS

BT Sport

